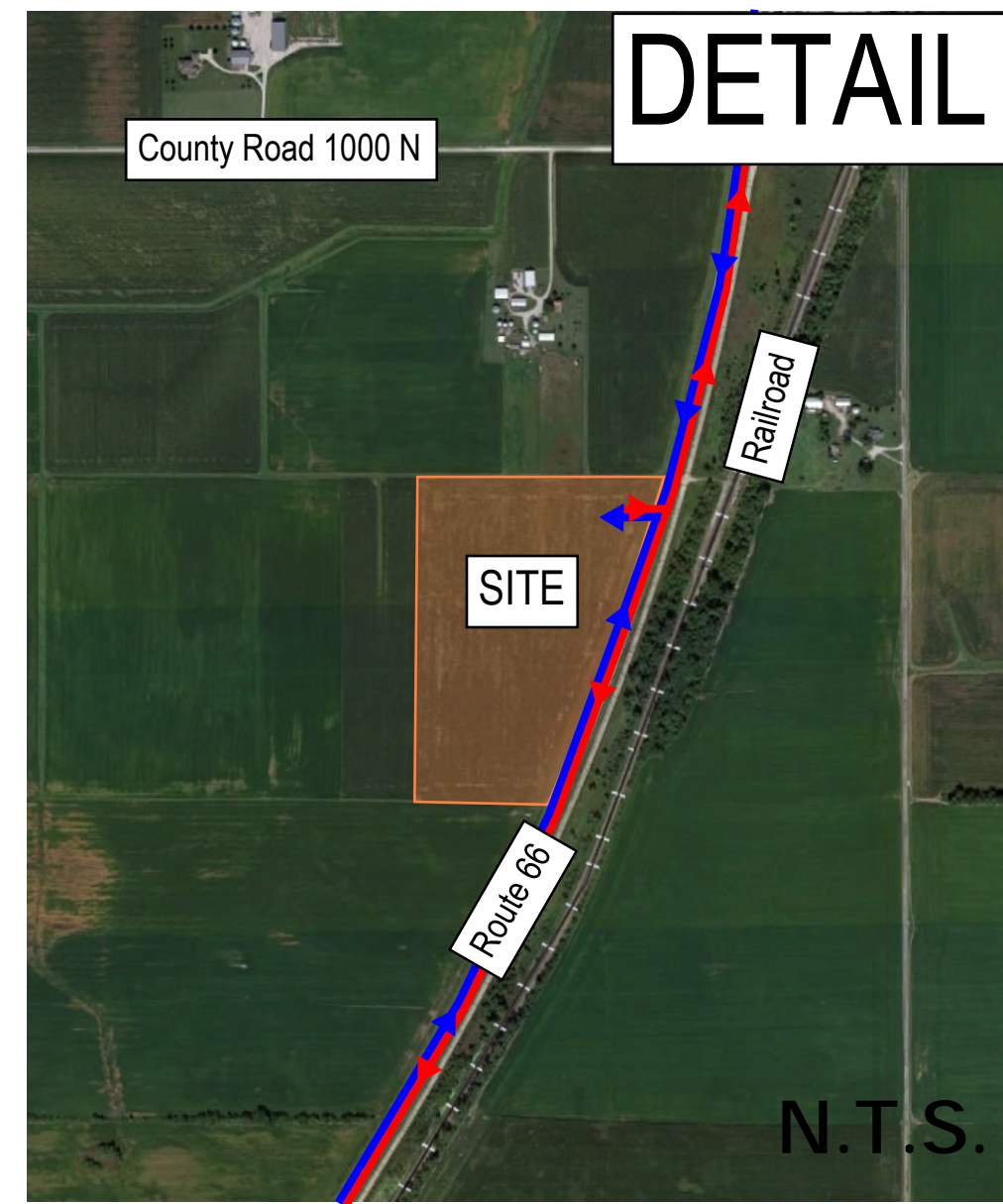
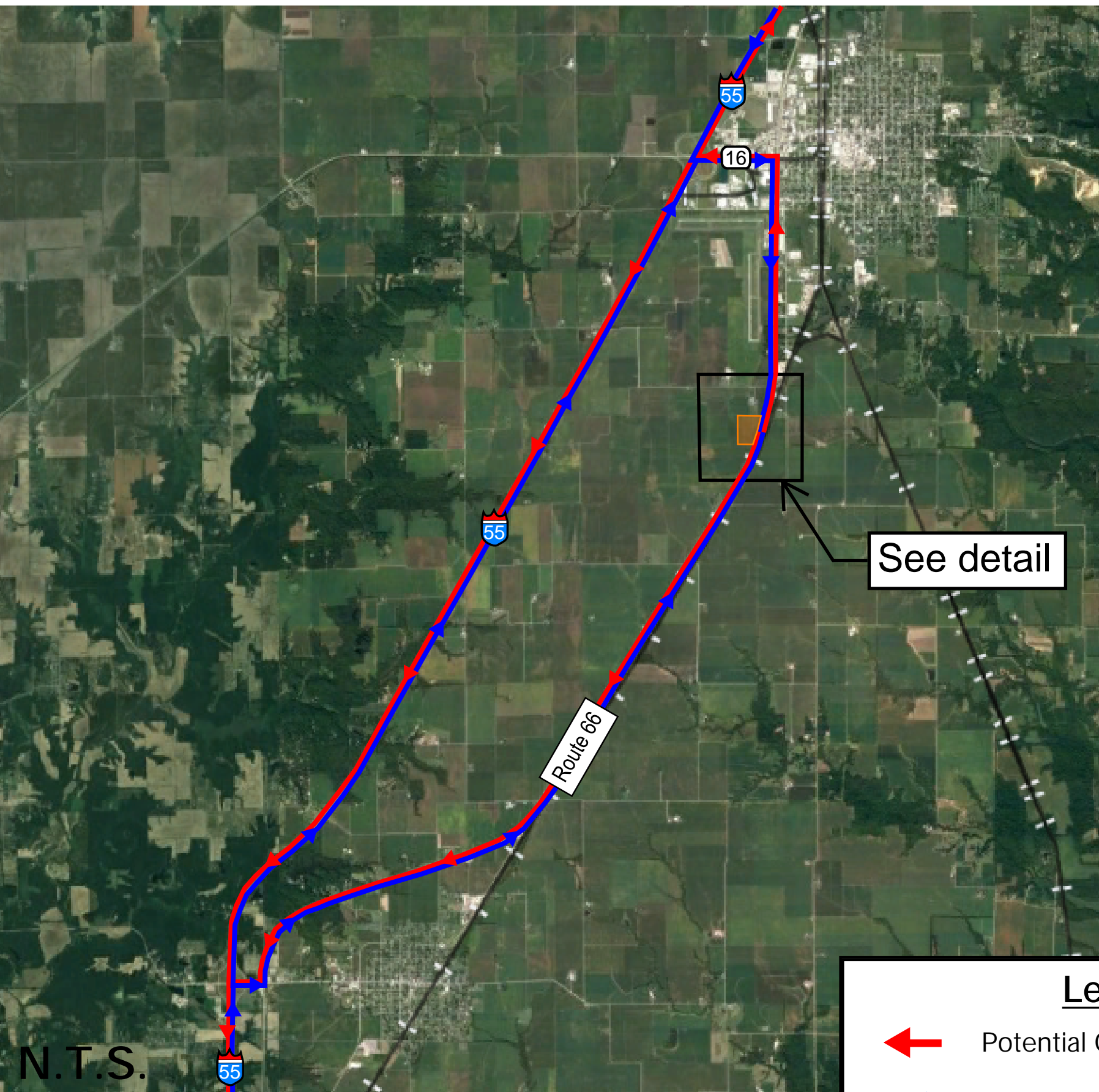


DETAIL



See detail






N.T.S.

Truck Route Notes:

- Trucks are to use Interstate 55 in route to the site
- Trucks will use Interstate 55 to access Route 66
- Truck can use U.S. Highway 16 to access Route 66
- Trucks will use Route 66 to access one driveway

Legend

-  Potential Outbound Truck Route
-  Potential Inbound Truck Route
-  Proposed Site Location

LANGAN
Langan Engineering and Environmental Services, Inc.
www.langan.com

Project

LITCHFIELD SOLAR